

# PLATAFORM FOR LIFE EVENT DEVELOPMENT IN EGOVERNMENT ENVIRONMENTS

**PLEDGE**  
pledge



# Agenda

- Scenario
- Semantics
- LifeEvents
- Agents in the system
- Conclusions



# Scenario

- Web portals are emerging as significant tools enabling eGovernment
- Portals are the “gateways” between citizens and PAs
  - Reduction of time and cost both for Public Administrations and for citizens
- Increasing number but some shortcomings



# Scenario

- **Drawbacks:**
  - Lack of interoperability among solutions
  - Difficulties for locating services.
- **Goal:**
  - Redefine the services from the point of view of the citizen
    - Provide advanced services

# Semantics

- *“is an extension of the current web in which information is given well-defined meaning, better enabling computers and people to work in cooperation”*

*Tim Beners-Lee*

- “An ontology is a formal, explicit specification of a shared conceptualisation of a domain of interest.”

*Grubber*

- OWL, a W3C recommendation to express knowledge



# Semantic choices

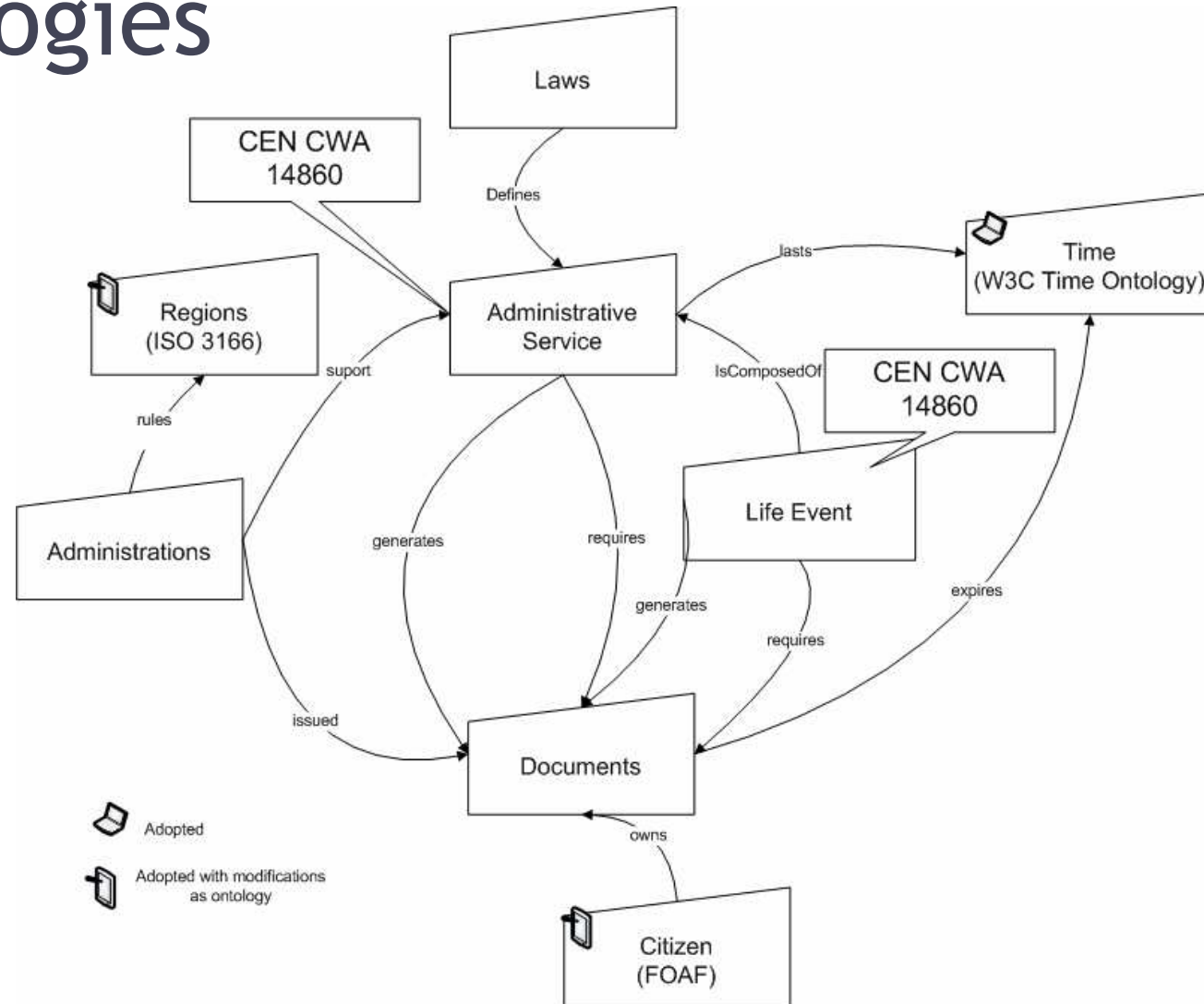
- OWL is used to model the information.
- SWRL to acquire new knowledge
- SAWSDL to describe services

# LifeEvent

- any particular situation in the life of a citizen that must be dealt with and requires assistance, support or license from PAs
  - Lost a wallet, turning 18, be born,...
- Aim: provide a uniform treatment of services
  - Derive a integral software architecture



# Ontologies

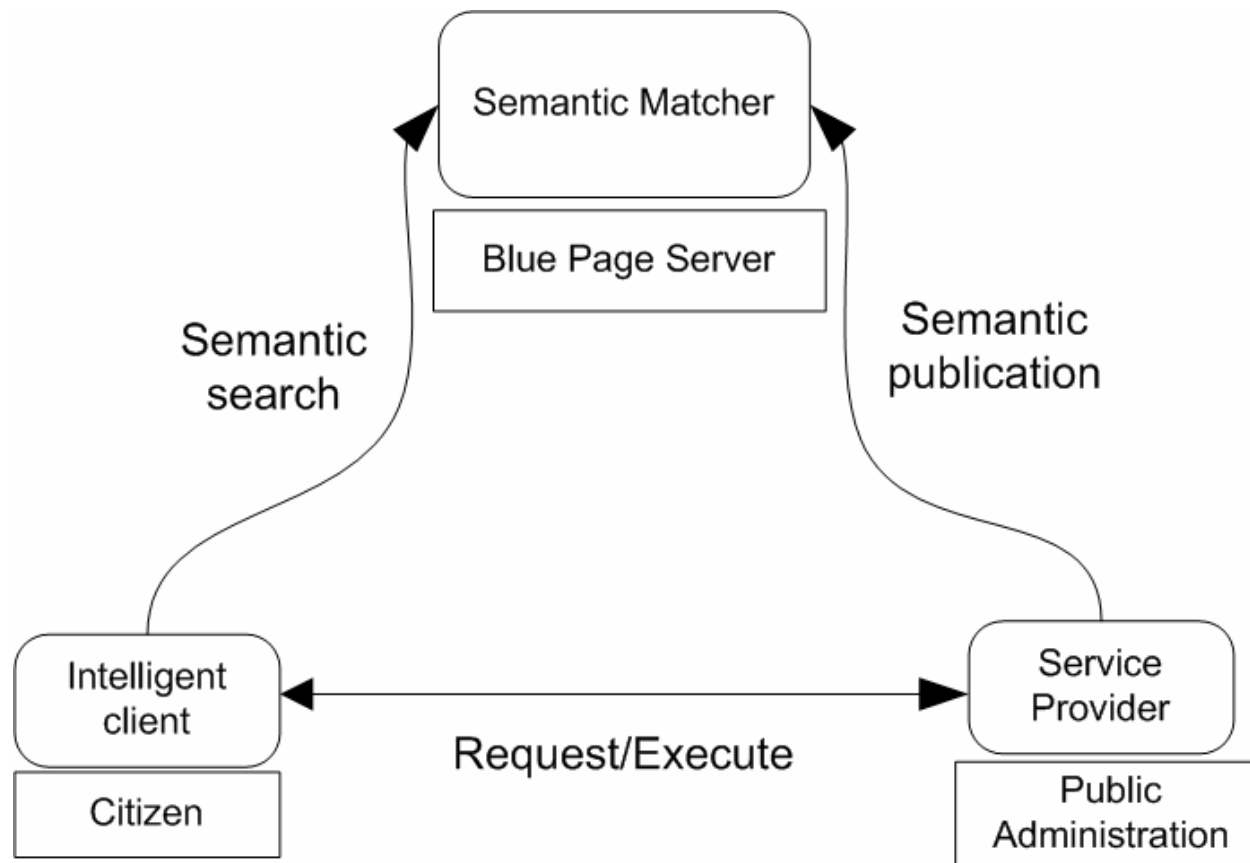




# Administrative Services

- Title and Description.
- Deadline.
- Public Administration responsible.
- Law.
- Input and Output documents.
- Internal operations.
- Related ASs
- Related LEs

# Semantic SOA





# Blue Page Server

- Responsible for supporting searches
- Implementation
  - Jena Engine
  - OWL rules
  - WSRL to get new knowledge
  - WS to access searches



# Server provider

- Options:
  - Public Administration
  - Digital Lawyer
- Implementation:
  - Semantic Web Services for LE/AS
  - List of “well-know” services:
    - AddDocument
    - CheckStatus
    - CancelOperation
    - CheckIdentity
    - ....



# Citizen

- **Functions:**
  - Search LE on the BPS
  - Invoke LE on the DigitalLawyer/Public Administration
- **Implementation:**
  - Desktop application
  - WS Client

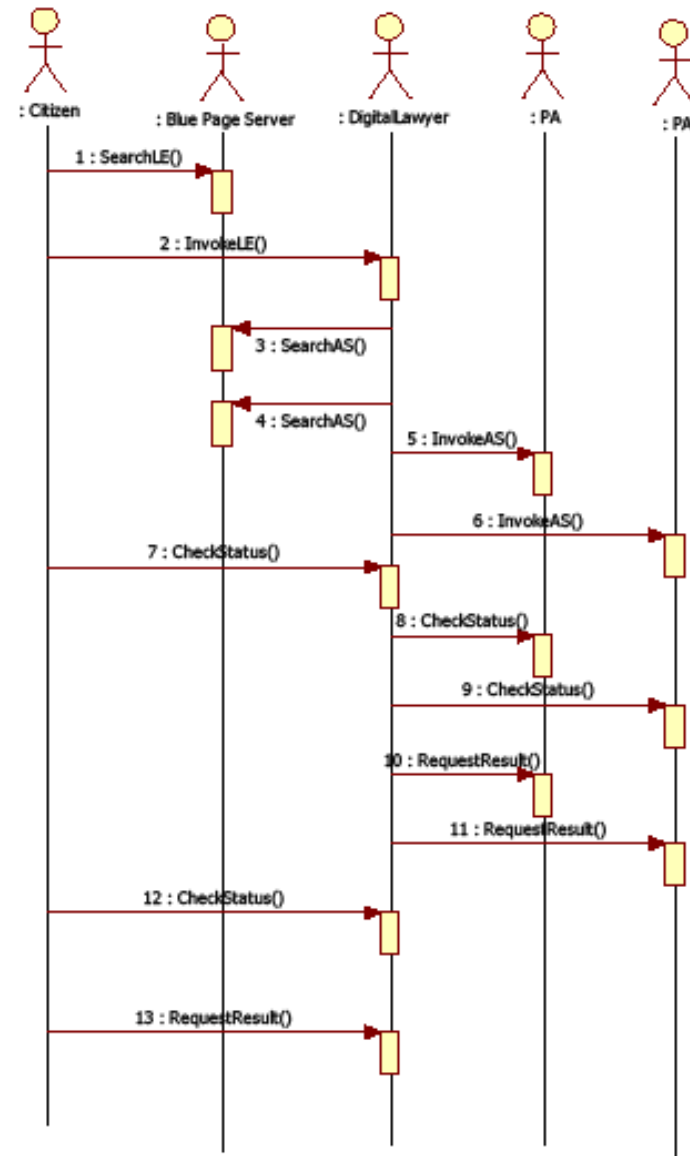


# Searches

- For LifeEvents
  - Based on profiles and questions
  - Agent involved: citizens
- For AdministrativeServices
  - Based on Input/Output Documents
  - Agent involved: Services providers

# System in use

- At runtime (or not), discovery/orchestration of services.
- At runtime, invocation of services.
  - SAWSDL4J library





# Open Issues

- Population mechanism
- Legal support
- Security conditions



# Conclusions

- Semantics as a enabler tool for interoperability
- Some administrations interested
  - Search for a critical mass
- Future line:
  - Support for “Web2.0” technology:
    - Folksonomies
    - Microformat especification
    - ...

Any Question?

# Thank you!!

***Luis Álvarez Sabucedo***

Universidade de Vigo, SPAIN

Luis.Sabucedo@det.uvigo.es



VIGO

